


The Bald Spot (#5)

The Bald Spot can be seen from anywhere in town, on the ridge to the east. The bare grassy slope gets its name because it is just that, a bald spot on the ridge. It is a very popular hike that climbs up a steep trail along an old cutline to near the top of the ridge.

The short trail is relatively strenuous but the fantastic panoramic view of the entire town of Tumbler Ridge and surrounding mountains that awaits at the top is well worth the effort. This hiking trail is maintained by the District of Tumbler Ridge.

Time/Distance: 1-2 hours/2 km return

Elevation Gain: 210 m (690 ft)

Rating: Moderate, very steep in places 

Directions to the Trailhead

Drive north on Mackenzie Way past the ball diamonds and saddle club entrance. At the T junction at the end of town, turn right onto Hwy 52 and drive for 1.5 km. There is a sign indicating the Bald Spot trail, which heads up to the left. Park in the small gravel pullout on the right side of the road here.

Trail Directions

The trail is 850 m each way, and climbs 210 m. Cross the road from the parking area, and head up the signed trail just before the metal gate. This gate is across the road that accesses the District of Tumbler Ridge's water tank. The trail follows straight up an old cutline. Some sections are less steep, and others are a bit of a scramble. After 150 m there is a clearing and you will walk past the water tower. After 650 m take the main trail to the right which bypasses a steeper section and has steps.

750 m from the start, just after a very steep section, the main trail branches off to the left. Follow this uphill for 50 m and you will arrive at the top of the Bald Spot.

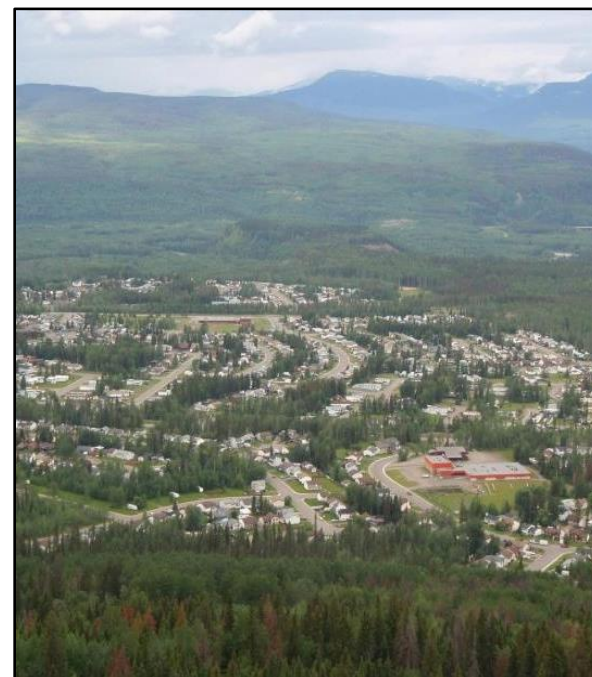
Below you the town of Tumbler Ridge is laid out. The entire area lies within the Tumbler Ridge UNESCO Global Geopark. See if you can find the building where you are staying! Some landmarks are the elementary school and high school on the middle bench, the Dinosaur Discovery Gallery on the top bench, and Hwy 29 heading to Chetwynd west of town. From here you can see the valleys of Flatbed Creek, the Murray River and the Wolverine River and the Hart Ranges of the Rocky Mountains on the horizon.

As recently as 10,000 to 20,000 years ago this landscape would have looked dramatically different, as the great ice sheets of the last Ice Age melted. The valley floor was a giant lake, impounded against a retreating ice wall to the northeast. Over time the lake level dropped, leaving behind what are known as lacustrine terraces. These terraces form many of the level areas now visible below, including the flat "benches" on which the town was built.

There is a small clearing and picnic table at the Bald Spot where you can sit and relax, have a snack and much needed drink, and take in the view. When you are ready, head back down the trail, being cautious on the steepest sections. Just before you reach the main trail after 50 m, you can turn off onto the uphill trail to the cutline and continue up to near the top of the ridge. This gains another 85 m over 300 m, and meets the Quality Lake trail which is shared with ATVs. Following this trail to the left for about 0.5 km will take you to another lookout bench.

© 2025 Wolverine Nordic and Mountain Society

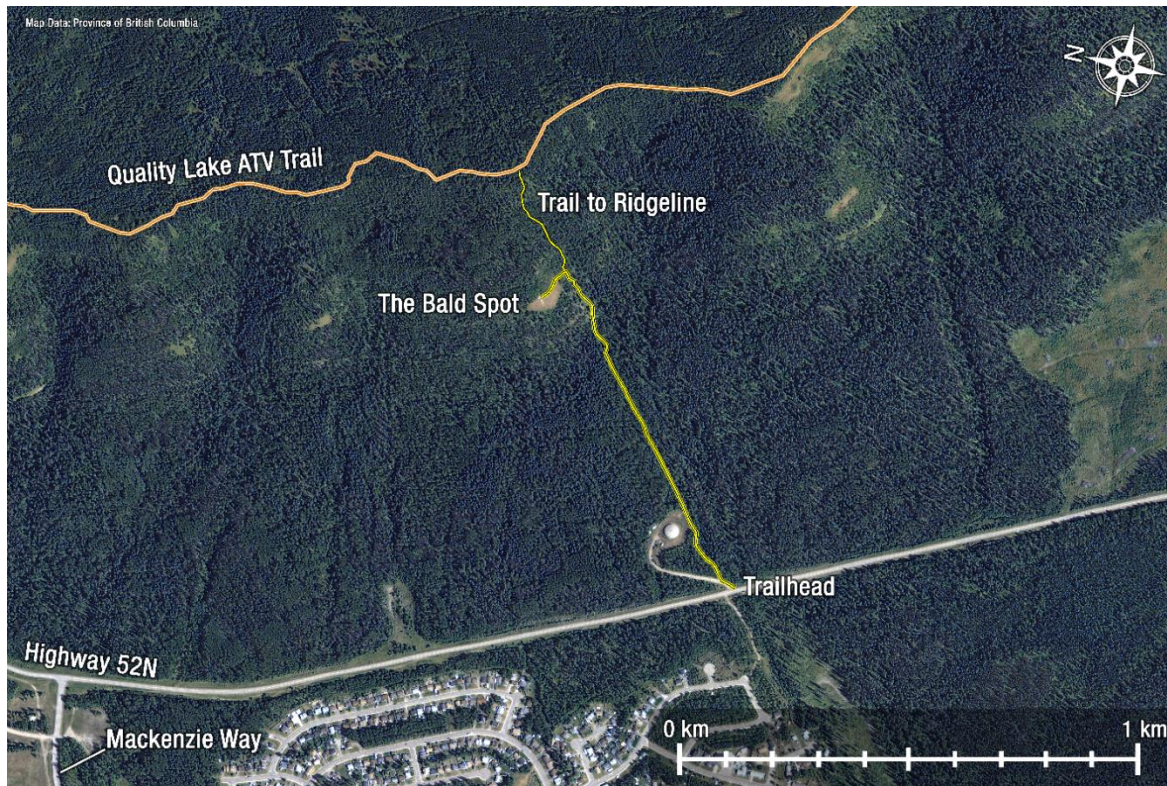
The Bald Spot Hiking Trail



Rating: Moderate 

Time: 1 – 2 hours



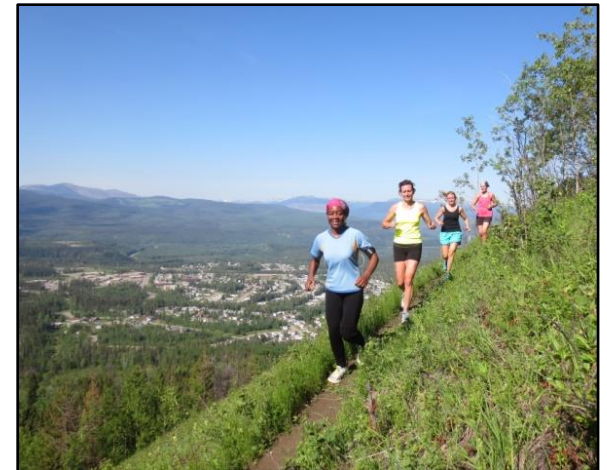


Bald Spot Trail

- *This trail is in bear country; travel in groups and make noise*
- *Please pack out what you packed in*



Fireworks over Tumbler Ridge from the Bald Spot



For more information, contact:

Wolverine Nordic and Mountain Society

Email: contact@wnms.ca

Website: www.wnms.ca

Tumbler Ridge Visitor Centre

(250) 242-3123

Tourism website: www.TumblerRidge.ca

Photo Credit: Birgit Sharman

Map: Steven Tory

